



Performance Under Pressure

PARTS LIST FOR
CA-2504-0MHB/0MRB
(AFTER SERIAL #10307198)

ENGINE OIL GRADE:	SAE10W-30
ENGINE OIL CAPACITY:	37 oz.
PUMP OIL GRADE:	Mi-T-M #AW-4085-0016
PUMP OIL CAPACITY:	15 oz.
PRESSURE NOZZLE SIZE:	5.0

This Parts Listing has been compiled for your benefit. You can be assured your Mi-T-M Cold Water Pressure Washer was constructed and designed with quality and performance in mind using over 25 years experience in the pressure washer business. Each component has been rigorously tested to insure the highest level of acceptance.

The contents of this Parts Listing are based on the latest product information available at the time of publication. Mi-T-M reserves the right to make changes in price, color, materials, equipment, specifications or models at any time without notice.

WARNING

THIS IS A PROFESSIONAL HIGH PRESSURE, COLD WATER PRESSURE WASHER. CAUTION SHOULD BE OBSERVED WHEN USING OR REPAIRING THIS UNIT! READ AND FOLLOW THE SAFETY WARNINGS LISTED BELOW BEFORE ATTEMPTING ANY REPAIRS ON THIS PRESSURE WASHER!

SAFETY WARNINGS

1. NEVER alter or modify the equipment. Be sure any accessory items and system components being used will withstand the pressure developed. Use only genuine Mi-T-M parts for repair of your pressure washer. Failure to do so can cause hazardous operating conditions and will VOID warranty.
2. NEVER make adjustments on machinery while the unit is connected to the power source. Turning over the machinery by hand during adjustment or cleaning might start the machinery, causing serious injury to the operator.
3. Know how to stop and bleed pressures quickly. Be thoroughly familiar with controls.
4. Before servicing the unit, turn unit off, relieve the water pressure and allow the unit to cool down. Do not make repairs while the unit is running. Service in a clean, dry, flat area.
5. After testing the machine, DO NOT leave the pressurized unit unattended. Shut off the unit and release trapped pressure before leaving.

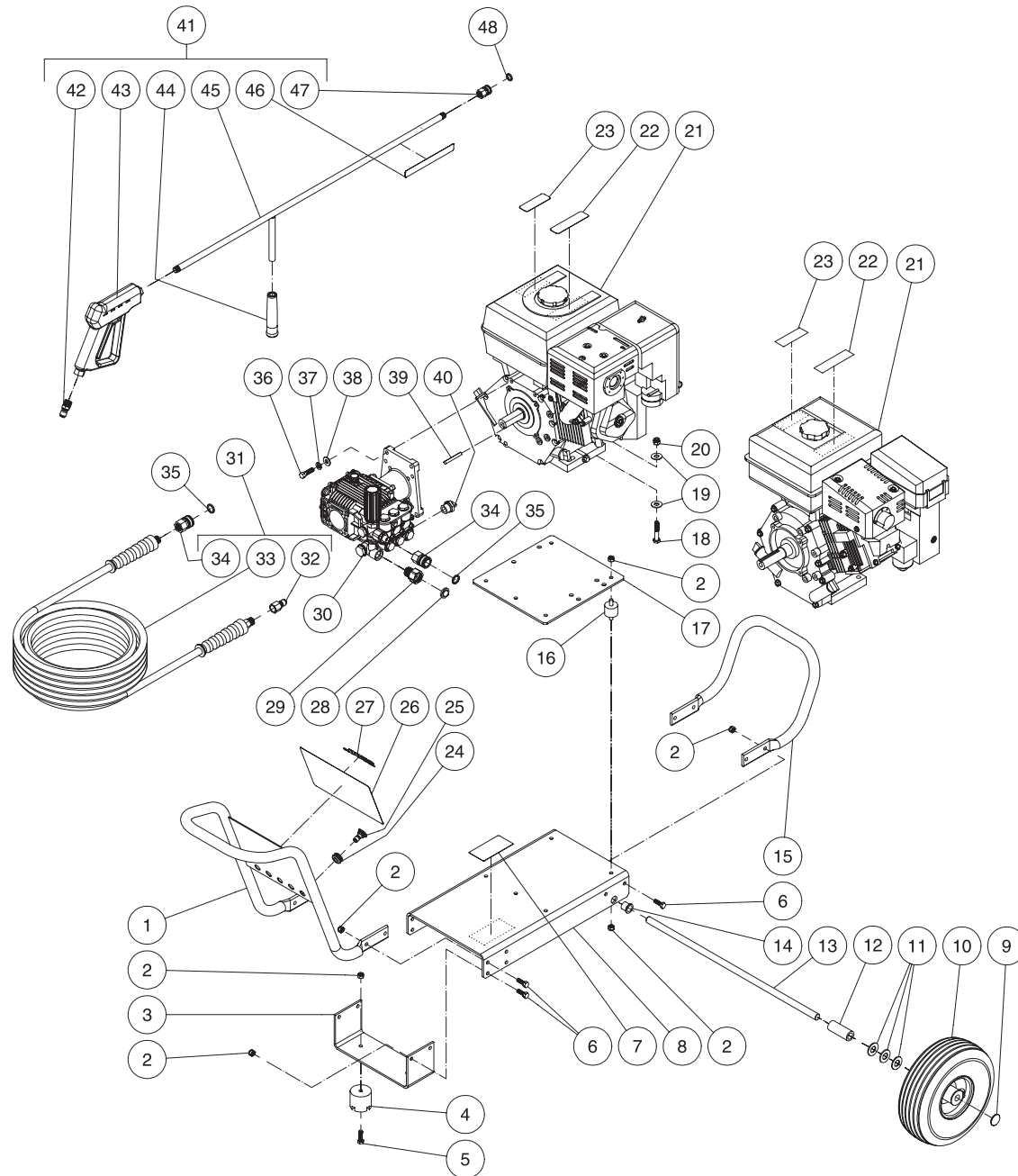
Table of Contents

SPECIFICATIONS.....	3
FRAME ASSEMBLY FOR CA-2504-0MHB/0MRB.....	4
PUMP ASSEMBLY (3-0173) AFTER SERIAL #10307198	6
UNLOADER ASSEMBLY (8-0533) After Serial #10307198	8
GUN ASSEMBLY (16-0001)	10

SPECIFICATIONS

MODEL NUMBER	CA-2504-0MHB	CA-2504-0MRB
Operating Pressure (PSI/Bar):	2500/172.4	
High Pressure Nozzle:	5.0	
Water Volume (GPM/lpm):	4.0/15.1	
Engine:	Honda	Subaru
Horsepower	9.0	
Engine Type	4 Stroke, Overhead Valve, Single Cylinder	
Oil Type	SAE10W-30	
Oil Capacity (oz./liters)	37/1.1	
Low Oil Protection	Oil Alert™	Low Oil Shutdown
Fuel Type	Unleaded Gasoline 86 Octane Minimum	
Fuel Capacity (gallon/ liters)	1.6/6.0	
Starting	Recoil	
Maximum No Load RPM	3600 (+/- 100) RPM	
Pump:	Direct Driven, Oil Bath, Triplex Piston	
Oil Type	Mi-T-M Pump Oil #AW-4085-0016	
Oil Capacity (oz./liters)	15/44	
Plungers	Ceramic	
Manifold	Forged Brass	
Valves	Stainless Steel	
Unloader	Adjustable	
Thermal Relief Valve	Relieves heated water during unloader bypass stage	
Unit Net Weight (lbs/Kg)	105/47.6	
Unit Shipping Weight (lbs/Kg)	155/70.3	
Unit Net Dimension (in/cm)	42.5Lx23.5Wx25H/108Lx60Wx63.5H	
Unit Shipping Dimension (in/cm)	39.5Lx25Wx31.5H/100Lx63.5Wx80H	

FRAME ASSEMBLY FOR CA-2504-0MHB/0MRB

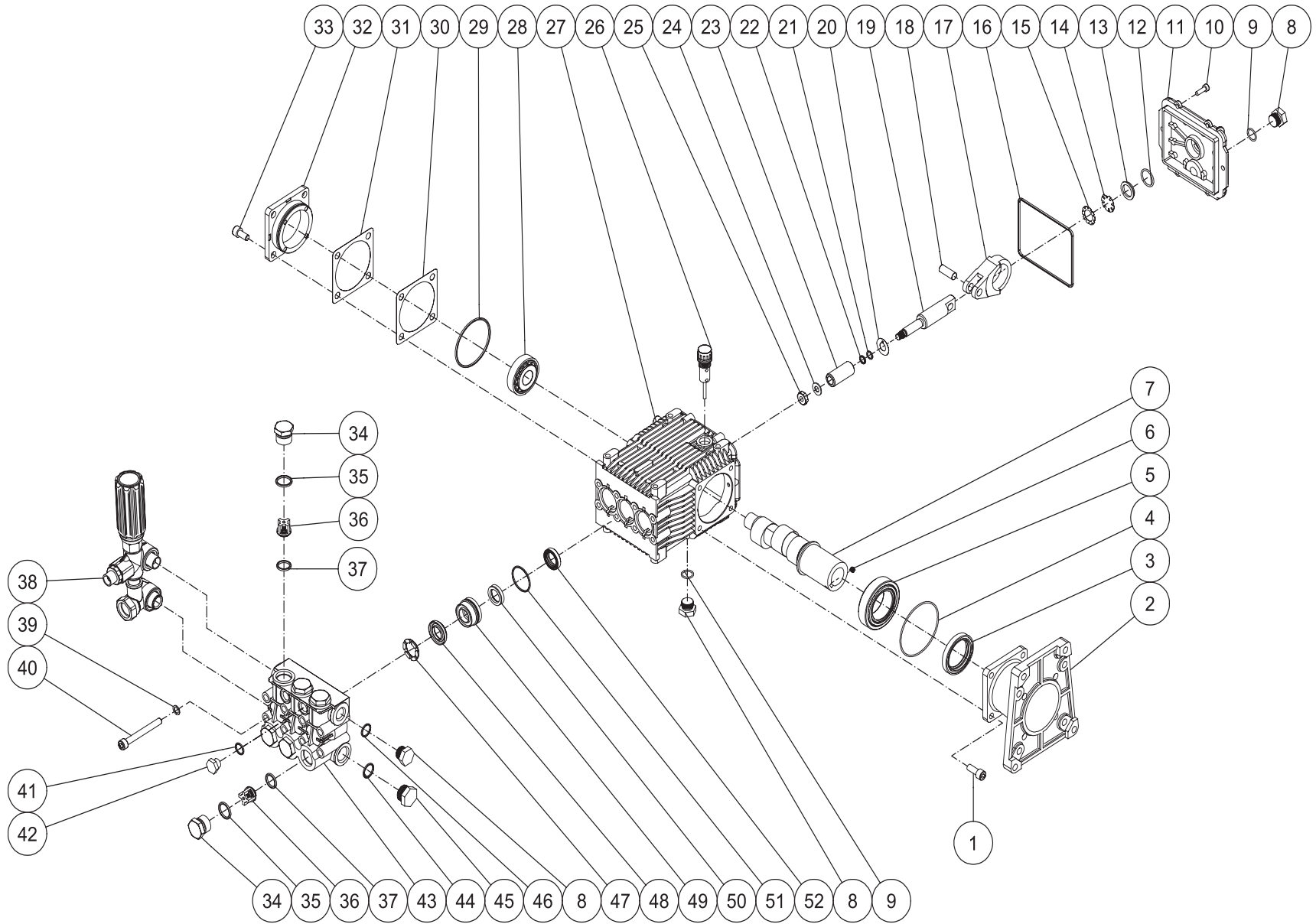


CA-2504-0MHB/R-052505-JJT

FRAME ASSEMBLY FOR CA-2504-0MHB/0MRB							
REF. #	DESCRIPTION	PART #	QTY.	REF. #	DESCRIPTION	PART #	QTY.
1	Front Handle Assembly	7-0182	1	25	Nozzle- 1505	18-0004	1
2	Locknut	30-0157	22	-	Nozzle- 2505	18-0153	1
3	Support Bracket	56-0054	1	26	Decal- Warning/Caution/Operation (See 34-9014)	N/A Sep.	1
4	Isolator	14-0008	2	27	Decal- 2500 Die Cut	34-0773	1
5	Bolt	27-0068	2	28	Inlet Filter Washer w/ Screen	19-0001	1
6	Bolt	27-0067	12	29	Garden Hose Swivel	23-0095	1
7	Decal- Data Plate	N/A	1	30	Pump	3-0272	1
8	Baseplate	5-0207	1	31	Pressure Hose Assembly (Inc. 32-34)	851-0007	1
9	Hub Cap	33-0018	2	32	Quick Connect Plug	17-0006	1
10	Wheel	14-0017	2	33	Hose	15-0003	1
11	Washer	28-0008	6	34	Quick Connect Socket	17-0004	2
12	Axle Spacer	62-0189	2	35	O-ring	25-0123	2
13	Axle	20-0748	1	36	Bolt	27-0118	4
14	Bushing	62-0175	2	37	Lockwasher	29-0008	4
15	Rear Handle	7-0183	1	38	Washer	28-0022	4
16	Vibration Isolator	14-0097	4	39	Key	43-0078	1
17	Isolation Plate	56-0053	1	40	Thermal Relief Valve	22-0005	1
18	Bolt	27-0121	4	41	Gun/Wand Assembly (Inc. 42-47)	851-0095	1
19	Flatwasher	28-0023	8	42	Quick Connect Plug	17-0005	1
20	Locknut	30-0159	4	43	Trigger Gun	16-0001	1
21	Engine- 9.0 HP Honda (CA-2504-0MHB)	1-0065	1	44	Wand Grip	7-0002	1
-	Engine- 9.0 HP Subaru (CA-2504-0MRB)	1-0134	1	45	Wand w/Handle	16-0418	1
22	Decal- Warning: Risk of Burns (See 34-9014)	N/A Sep.	1	46	Decal- Warning: Risk of Injection (See 34-9014)	N/A Sep.	1
23	Decal- Caution: Risk of Fire (See 34-9014)	N/A Sep.	1	47	Quick Connect Socket	17-0001	1
24	Grommet	33-0001	5	48	O-ring	25-0122	1
25	Nozzle- 0005	18-0003	1		Decal Kit (Inc. 22-23, 26, 46)	34-9014	

*Must Order in One Foot Lengths

PUMP ASSEMBLY (3-0173) AFTER SERIAL #10307198

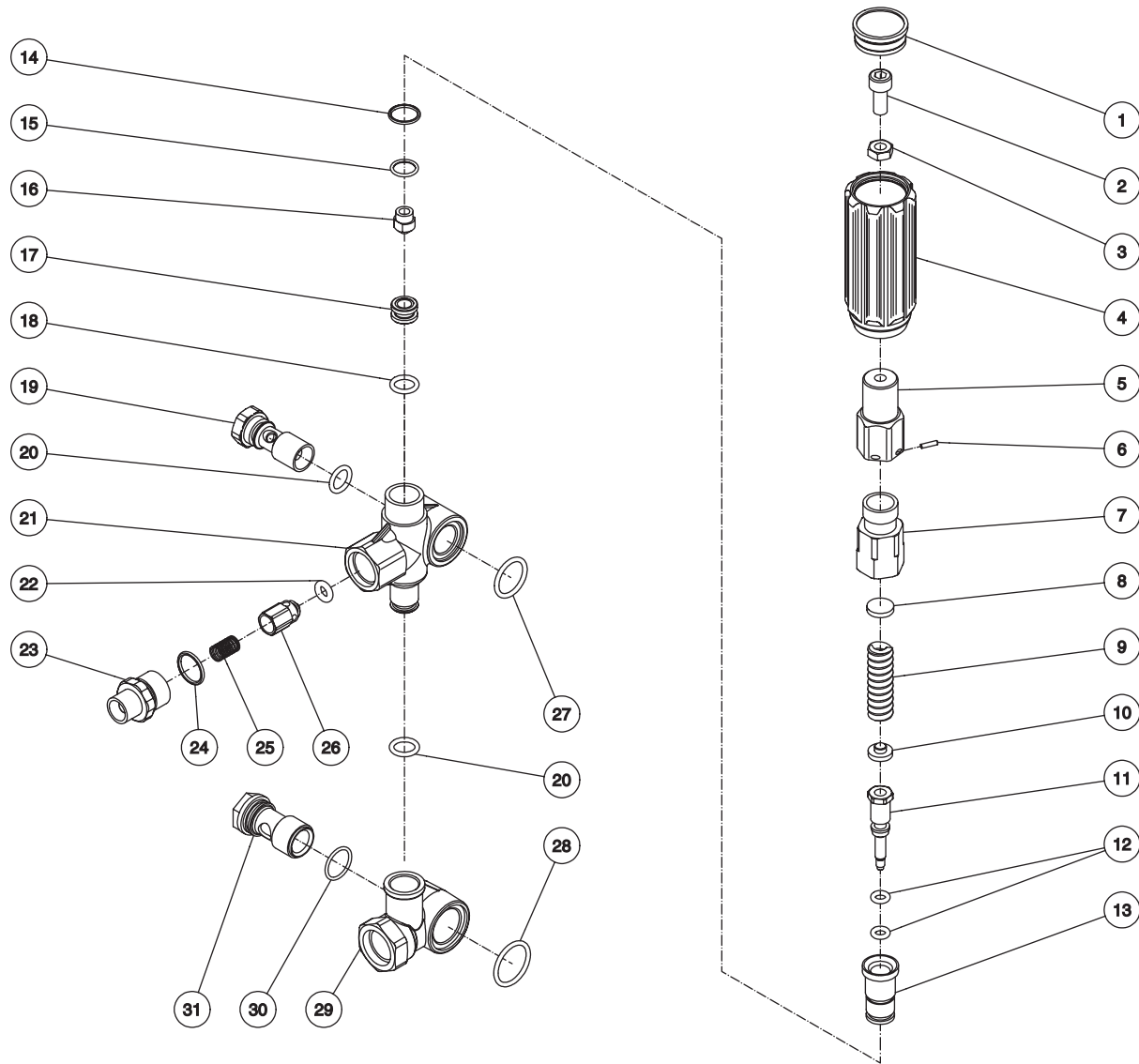


3-0173-031407-CAW

PUMP ASSEMBLY (3-0173)

REF. #	DESCRIPTION	PART #	QTY.	REF. #	DESCRIPTION	PART #	QTY.	REF. #	DESCRIPTION	PART #	QTY.
1	Screw	27-8432	4	20	Washer	46-0700	3	39	Lockwasher	29-0154	8
2	Flange	46-0714	1	21	Back-up Ring	25-0404	3	40	Bolt	27-8440	8
3	Oil Seal	26-0194	1	22	O-ring	25-0382	3	41	O-ring	25-0387	2
4	O-ring	25-0397	1	23	Piston	46-0701	3	42	Plug	39-0096	2
5	Bearing	48-0062	1	24	Washer	26-0191	3	43	Manifold	46-0711	1
6	Set Screw	27-8886	1	25	Piston Nut	30-6020	3	44	O-ring	25-0372	1
7	Crankshaft	46-0895	1	26	Oil Dipstick	39-0090	1	45	Plug	39-0202	1
8	Plug	39-0203	3	27	Crankcase	46-0811	1	46	O-ring	25-0510	1
9	O-ring	25-0325	2	28	Bearing	48-0072	1	47	Support Ring	46-0710	3
10	Bolt	27-8885	6	29	O-ring	25-0380	1	48	V-Packing	46-0709	3
11	Crankcase Cover	46-0719	1	30	Shim (Qty. Varies 1-3)	46-0705	-	49	Packing Retainer	46-0708	3
12	O-ring	25-0370	1	31	Shim (Qty. Varies 1-3)	46-0704	-	50	Low Pressure Seal	46-0707	3
13	Oil Sight Glass	46-0670	1	32	Support Bearing Cap	46-0703	1	51	O-ring	25-0384	3
14	Reflector	46-0824	1	33	Bolt	27-8884	4	52	Oil Seal	46-0931	3
15	Retainer	46-0671	1	34	Valve Cap	39-0095	6		Oil Seal Kit (Inc. 1, 1, 1, 1, 3 each 3, 4, 16, 29, 47)	70-0337	
16	O-ring	25-0398	1	35	O-ring	25-0160	6		Piston Kit (Inc. 3 each 20-25)	70-0352	
17	Connecting Rod	46-0922	3	36	Single Valve Assembly (Inc. 46-50) (See 70-0179)	N/A Sep.	6		High Pressure Seal Kit (Inc. 3 each 43, 45, 46)	70-0177	
18	Piston Pin	46-0698	3	37	O-ring	25-0386	6		Support Ring Kit (Includes 3 each 42)	70-0178	
19	Plunger Rod	46-0699	3	38	Unloader Assembly	8-0533	1		Valve Kit (Includes 6 each 36, 37)	70-0179	

UNLOADER ASSEMBLY (8-0533) After Serial #10307198



8-0533-102104-CAW

UNLOADER ASSEMBLY (8-0533)							
REF. #	DESCRIPTION	PART #	QTY.	REF. #	DESCRIPTION	PART #	QTY.
1	Unloader Cap	7-0142	1	17	Seat	8-0529	1
2	Screw	27-8433	1	18	O-ring	25-0527	1
3	Nut	30-3025	1	19	Bolt	8-0531	1
4	Unloader Knob	7-0141	1	20	O-ring	25-0388	2
5	Unloader	8-0476	1	21	Unloader Body	8-0530	1
6	Unloader Pin	8-0478	1	22	O-ring	25-0437	1
7	Spring Guide	8-0523	1	23	Adapter Nipple	24-0159	1
8	Upper Plate	8-0524	1	24	O-ring	25-0372	1
9	Unloader Spring	49-0132	1	25	Unloader Check Valve Spring	49-0123	1
10	Lower Plate	8-0525	1	26	Unloader Check Valve	8-0454	1
11	Piston	8-0526	1	27	O-ring	25-0528	1
12	O-ring	25-0526	2	28	O-ring	25-0519	1
13	Piston Guide	8-0527	1	29	Bypass Housing	8-0532	1
14	O-ring	25-0510	1	30	O-ring	25-0389	1
15	O-ring	25-0407	1	31	Bolt	8-0517	1
16	Bypass Jet	8-0528	1		Unloader Repair Kit (Inc. 12, 14-15, 18, 20, 22, 24, 27, 28, 30)	70-0341	